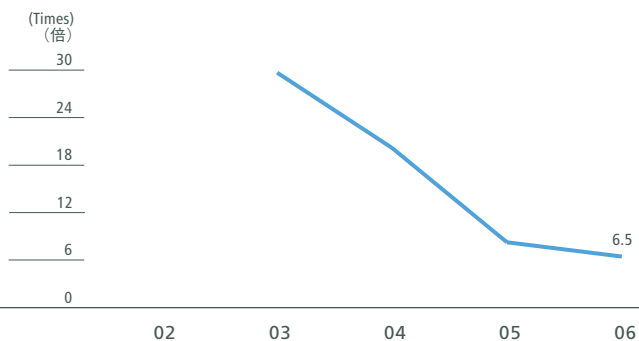
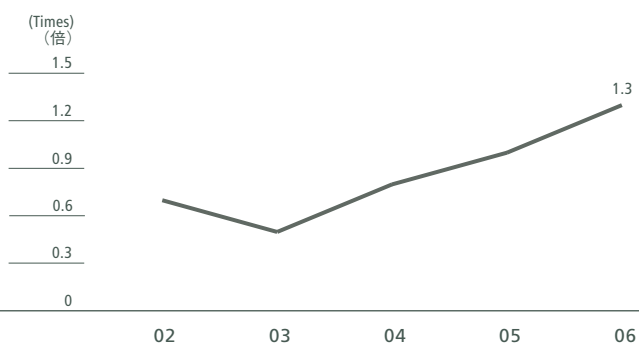


» Common Stock Information 発行株式に関する情報

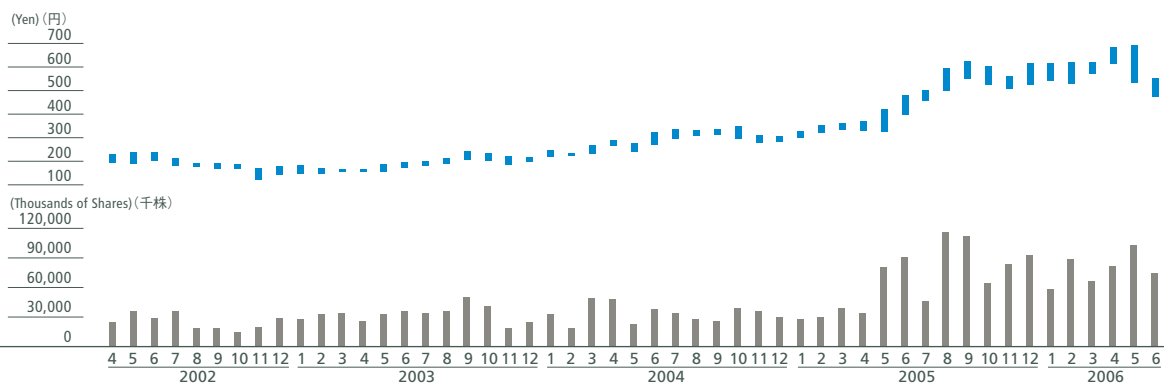
Price Earnings Ratio (PER) 株価収益率



Price Book Value Ratio (PBR) 株価純資産倍率



Price Range of Stock and Trading Volume 株価推移と出来高



		2002	2003	2004	2005	2006	2006
		Yen	Yen	Yen	Yen	Yen	U.S. dollars
		円	円	円	円	円	ドル
Stock price at the end of fiscal year	株価	¥219	¥161	¥261	¥347	¥617	\$5.25
Net income (loss) per share	一株当たり当期純利益 (損失)	-8.24	5.42	12.95	41.73	94.54	0.80
Diluted net income per share	潜在株式調整後一株当たり当期純利益	—	—	12.74	—	92.17	0.78
Shareholders' equity per share	一株当たり株主資本	308.65	306.67	324.43	360.93	465.48	3.96
PER (Times)	株価収益率 (PER)	—	29.7	20.2	8.3	6.5	—
PBR (Times)	株価純資産倍率 (PBR)	0.7	0.5	0.8	1.0	1.3	—

Note: Figures for PER and PBR are calculated based on the closing price of the Company's shares listed on the First Section of the Tokyo Stock Exchange on the last trading day in March of each year. These figures are for the parent company only.

注：本表の株価は親会社のものであり、株価収益率および株価純資産倍率は東京証券取引所（第一部）の各年の3月末の終値に基づいて計算されています。