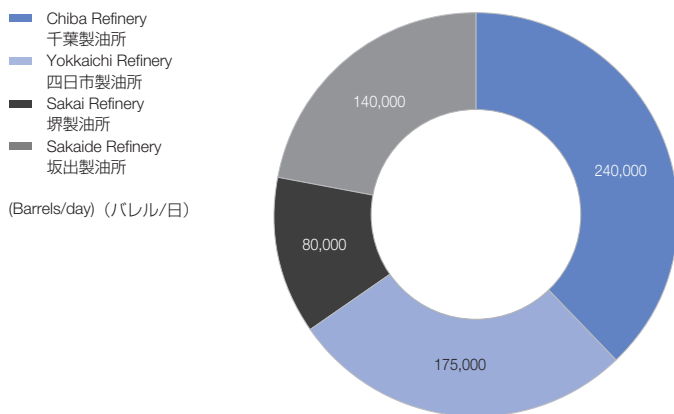


Processing Capacity by Refinery (As of April 1, 2007)

製油所別処理能力 (2007年4月1日現在)



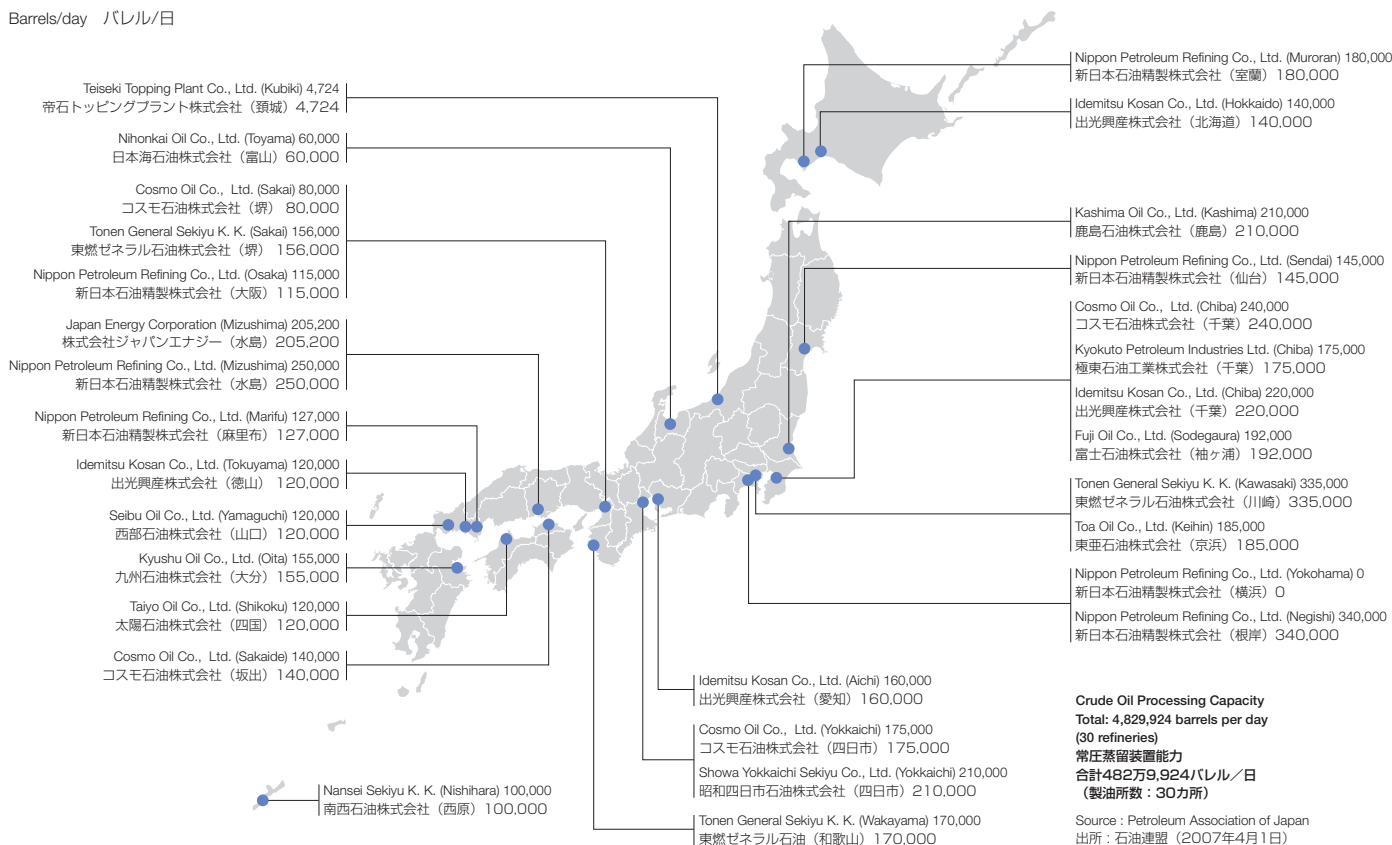
(Barrels/day) (バレル/日)

| | | Barrels/day | バレル/日 |
|---|----------------|------------------|-------|
| Chiba Refinery | 千葉製油所 | 240,000 | |
| Yokkaichi Refinery | 四日市製油所 | 175,000 | |
| Sakai Refinery | 堺製油所 | 80,000 | |
| Sakaide Refinery | 坂出製油所 | 140,000 | |
| Cosmo Oil total | コスモ石油計 | 635,000 | |
| Industry total | 全国計 | 4,829,924 | |
| Cosmo Oil share of Japan's total topper capacity | トッパーシェア | 13.1% | |

Refinery Location and Crude Oil Processing Capacity in the Japanese Petroleum Industry (As of April, 2007)

国内石油業界における製油所の所在地と常圧蒸留装置能力 (2007年4月現在)

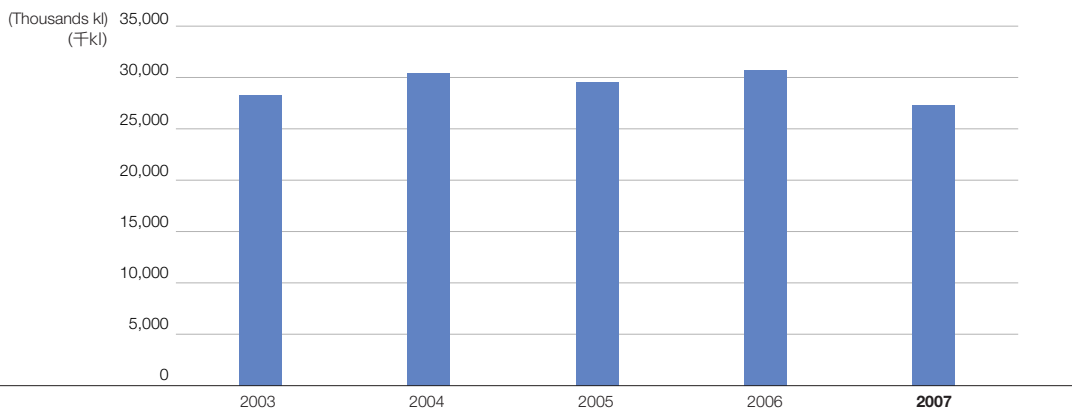
Barrels/day バレル/日



Crude Oil Processing Capacity
Total: 4,829,924 barrels per day
(30 refineries)
常圧蒸留装置能力
合計482万9,924バレル/日
(製油所数: 30カ所)

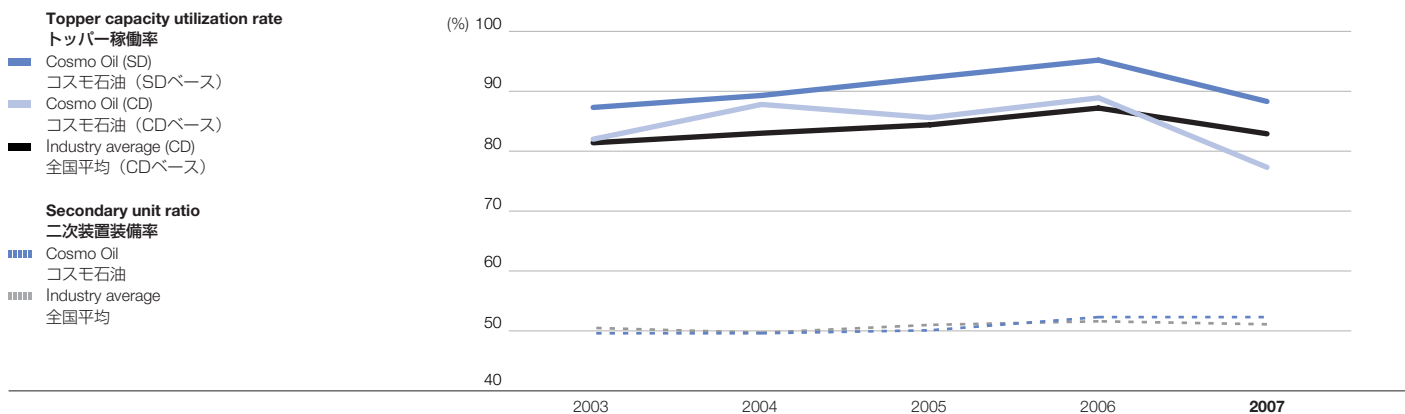
Source: Petroleum Association of Japan
 出所: 石油連盟 (2007年4月1日)

Volume of Crude Oil Processed
原油処理量



| | | Thousands kl 千kl | | | | |
|-------------------------------|-------|------------------|--------|--------|--------|--------|
| | | 2003 | 2004 | 2005 | 2006 | 2007 |
| Volume of crude oil processed | 原油処理量 | 28,310 | 30,404 | 29,544 | 30,707 | 27,283 |

Topper Capacity Utilization Rate, Secondary Unit Ratio
トッパー稼働率・二次装置装備率



| | | % | | | | |
|---|----------------|------|------|------|------|------|
| | | 2003 | 2004 | 2005 | 2006 | 2007 |
| Topper capacity utilization rate | トッパー稼働率 | | | | | |
| Cosmo Oil (SD) | コスモ石油 (SDベース) | 87.3 | 89.3 | 92.3 | 95.2 | 88.3 |
| Cosmo Oil (CD) | コスモ石油 (CDベース) | 82.0 | 87.8 | 85.6 | 88.9 | 77.3 |
| Industry average (CD) | 全国平均 (CDベース) | 81.4 | 83.0 | 84.4 | 87.2 | 82.9 |
| FCC capacity utilization rate | FCC稼働率 | | | | | |
| Cosmo Oil | コスモ石油 | 87.0 | 92.5 | 86.5 | 90.0 | 76.2 |
| Secondary unit ratio | 二次装置装備率 | | | | | |
| Cosmo Oil | コスモ石油 | 49.6 | 49.6 | 50.1 | 52.3 | 52.3 |
| Industry average | 全国平均 | 50.5 | 49.7 | 51.0 | 51.6 | 51.1 |

Notes: 1. CD: calendar-day basis SD: stream-day basis

2. Secondary units include direct desulfurization units, catalytic reformer units, fluid catalytic cracking units and alkylation units. Secondary unit ratio is based on Petroleum Association of Japan data.

Source: Figures for the industry average topper capacity utilization rate are from the Petroleum Association of Japan, and the volume of crude oil processed is the moving average for the period, based on the newest capacity data as of April 1, 2007.

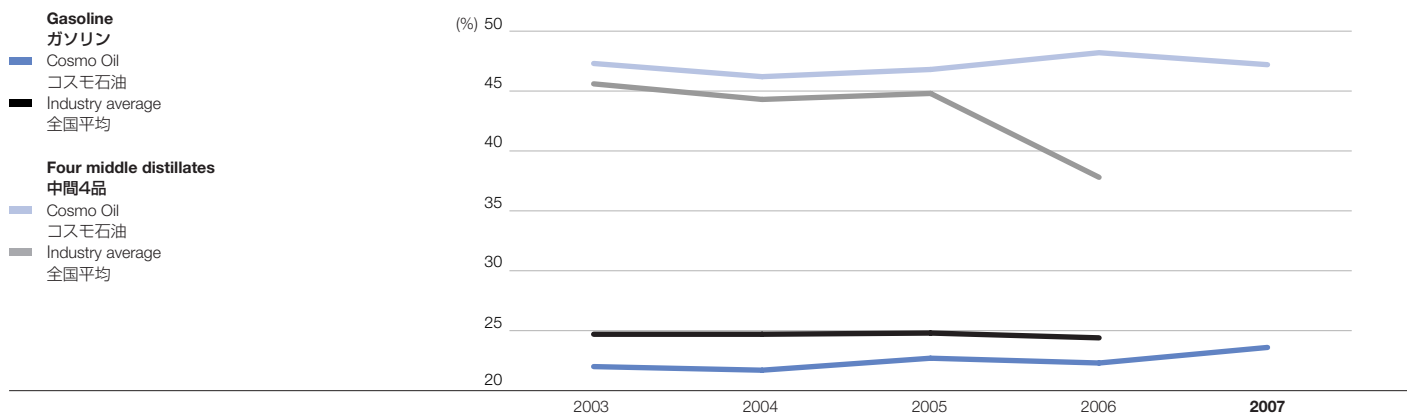
出所: 全国トッパー稼働率 石油連盟 原油処理能力は期中平均、最新データについては2007年4月1日現在の能力。

注: 1. CD: Calendar day ベース SD: 定期整備の影響を除いた稼働率

2. 二次装置は直接脱硫装置、接触改質装置、接触流動分解装置、アルキレート装置を指します。装備率は石油連盟データを基に当社試算。

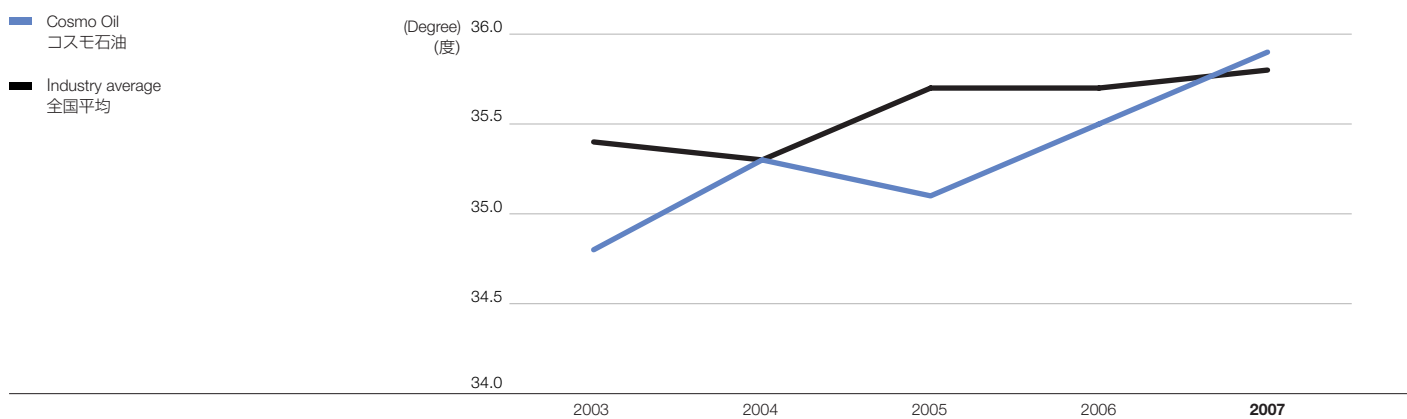
Yields of Gasoline and Four Middle Distillates (Jet Fuel, Kerosene, Diesel Fuel, and Heavy Fuel Oil A)

ガソリンおよび中間4品（ジェット燃料、灯油、軽油、A重油）得率



| | | 2003 | 2004 | 2005 | 2006 | 2007 |
|--------------------------------|-------------|------|------|------|------|-------------|
| Gasoline | ガソリン | | | | | |
| Cosmo Oil | コスモ石油 | 22.0 | 21.7 | 22.7 | 22.3 | 23.6 |
| Industry average | 全国平均 | 24.7 | 24.7 | 24.8 | 24.4 | N.A. |
| Four middle distillates | 中間4品 | | | | | |
| Cosmo Oil | コスモ石油 | 47.3 | 46.2 | 46.8 | 48.2 | 47.2 |
| Industry average | 全国平均 | 45.6 | 44.3 | 44.8 | 37.8 | N.A. |

API Gravity API度



| | | 2003 | 2004 | 2005 | 2006 | 2007 |
|------------------|-------|------|------|------|------|-------------|
| Cosmo Oil | コスモ石油 | 34.8 | 35.3 | 35.1 | 35.5 | 35.9 |
| Industry average | 全国平均 | 35.4 | 35.3 | 35.7 | 35.7 | 35.8 |

Source: Japan Petroleum Statistics Association, "Statistical Indicator No.11"; Ministry of Economy, Trade and Industry, "Petroleum Data"
出所: 石油統計部会「指定統計11号」経済産業省「石油資料」