

# Common Stock Information

## 発行株式に関する情報

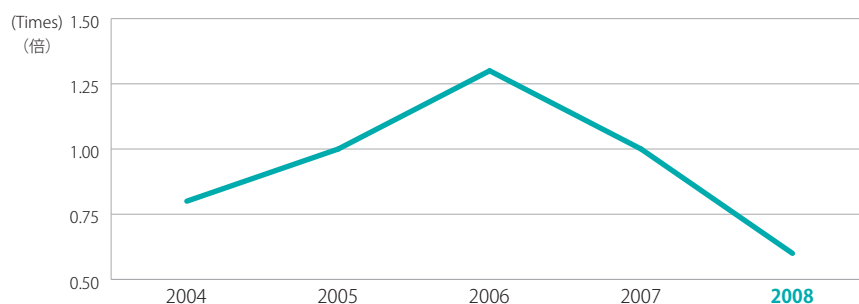
### Price Earnings Ratio (PER)

株価収益率



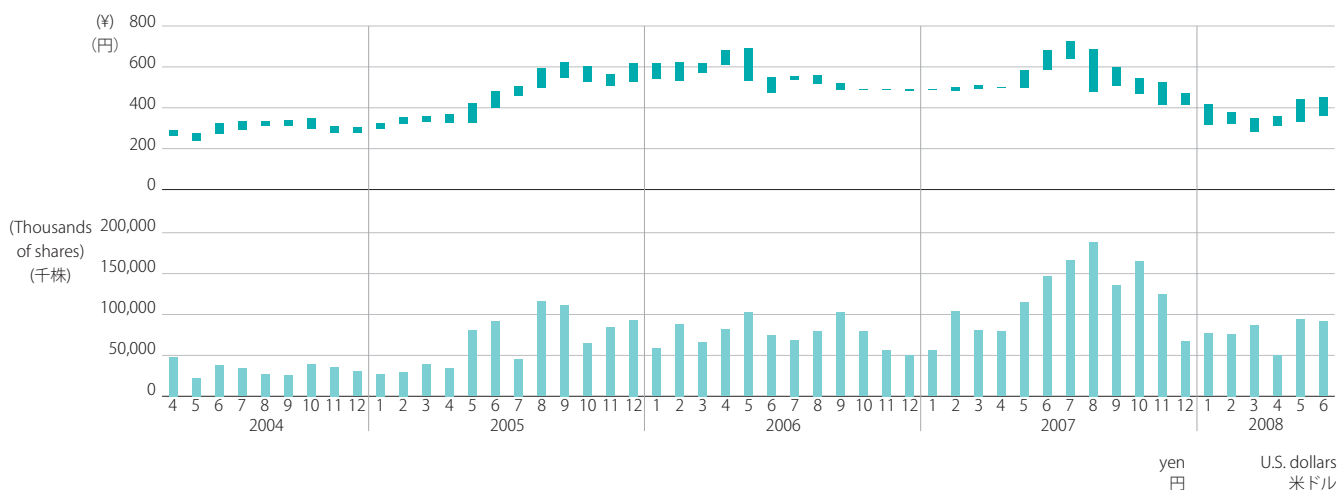
### Price Book Value Ratio (PBR)

株価純資産倍率



### Price Range of Stock and Trading Volume

株価推移と出来高



|                                       |                   | 2004   | 2005   | 2006   | 2007   | 2008   | 2008   |
|---------------------------------------|-------------------|--------|--------|--------|--------|--------|--------|
| Stock price at the end of fiscal year | 株価                | ¥261   | ¥347   | ¥617   | ¥494   | ¥313   | \$3.12 |
| Net income per share                  | 一株当たり当期純利益        | 12.95  | 41.73  | 94.54  | 39.54  | 46.72  | 0.47   |
| Diluted net income per share          | 潜在株式調整後一株当たり当期純利益 | 12.74  | -      | 92.17  | 37.91  | 44.98  | 0.45   |
| Shareholders' equity per share        | 一株当たり純資産          | 324.43 | 360.93 | 465.48 | 506.15 | 522.84 | 5.22   |
| PER (Times)                           | 株価収益率 (PER)       | 20.2   | 8.3    | 6.5    | 12.5   | 6.7    | -      |
| PBR (Times)                           | 株価純資産倍率 (PBR)     | 0.8    | 1.0    | 1.3    | 1.0    | 0.6    | -      |

Note: Figures for PER and PBR are calculated based on the closing price of the Company's shares listed on the First Section of the Tokyo Stock Exchange on the last trading day in March of each year. These figures are for the parent company only.

注： 本表の株価は親会社のものであり、株価収益率および株価純資産倍率は東京証券取引所（第一部）の各年の3月末の終値に基づいて計算されています。